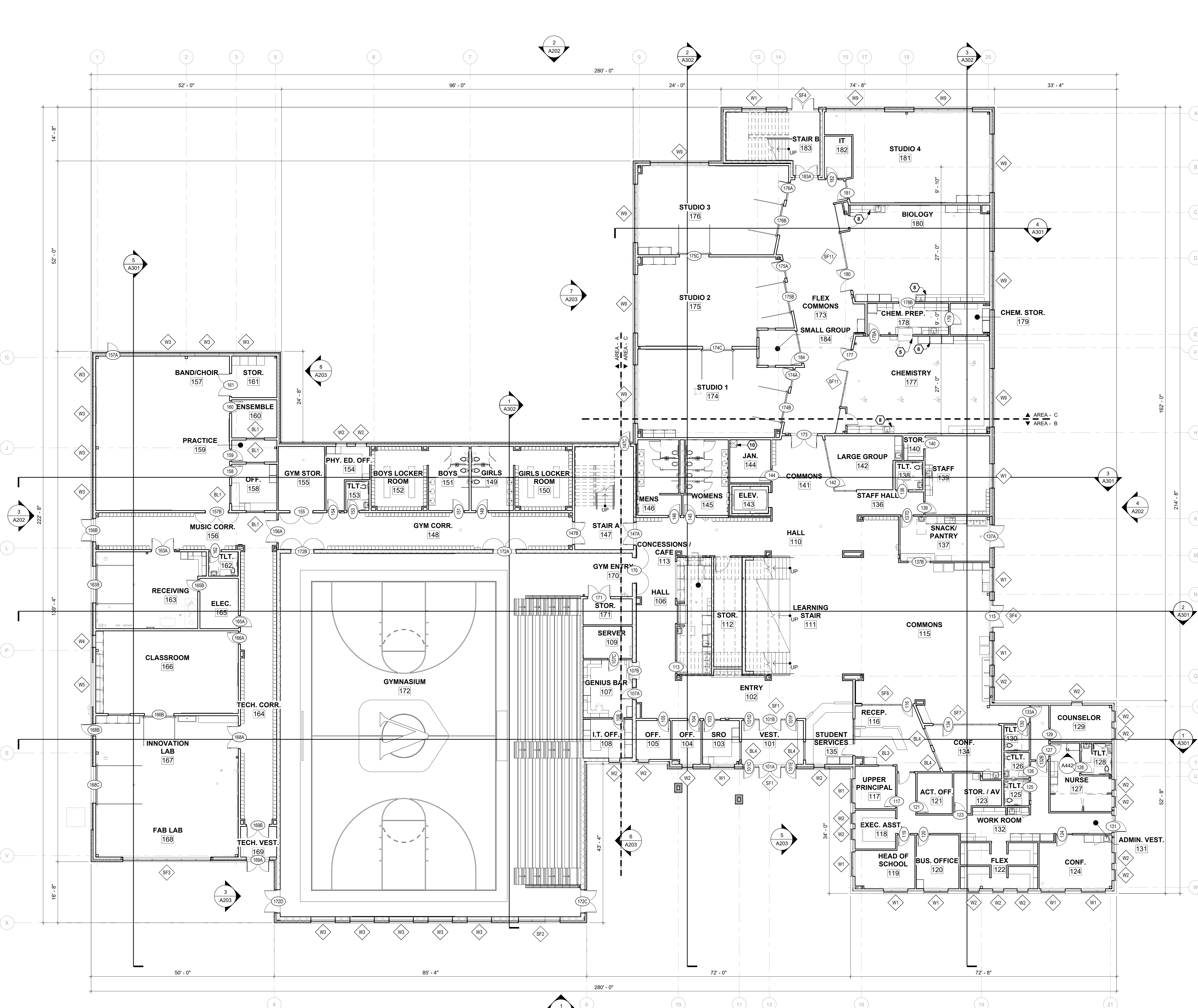


**GENERAL NOTES**

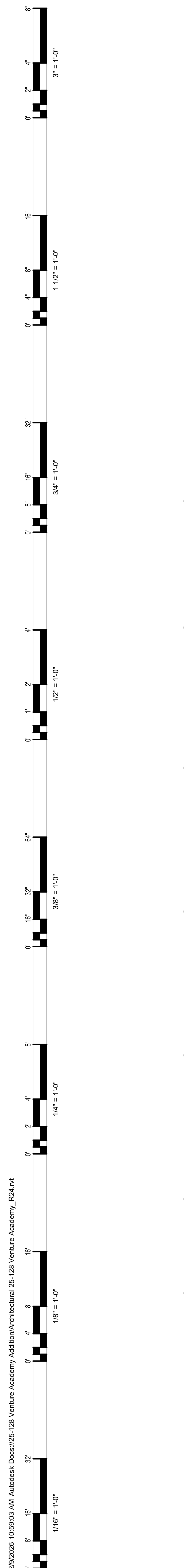
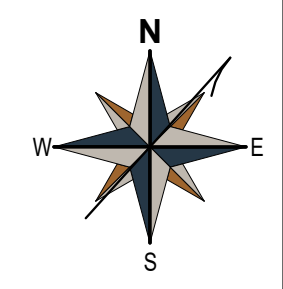
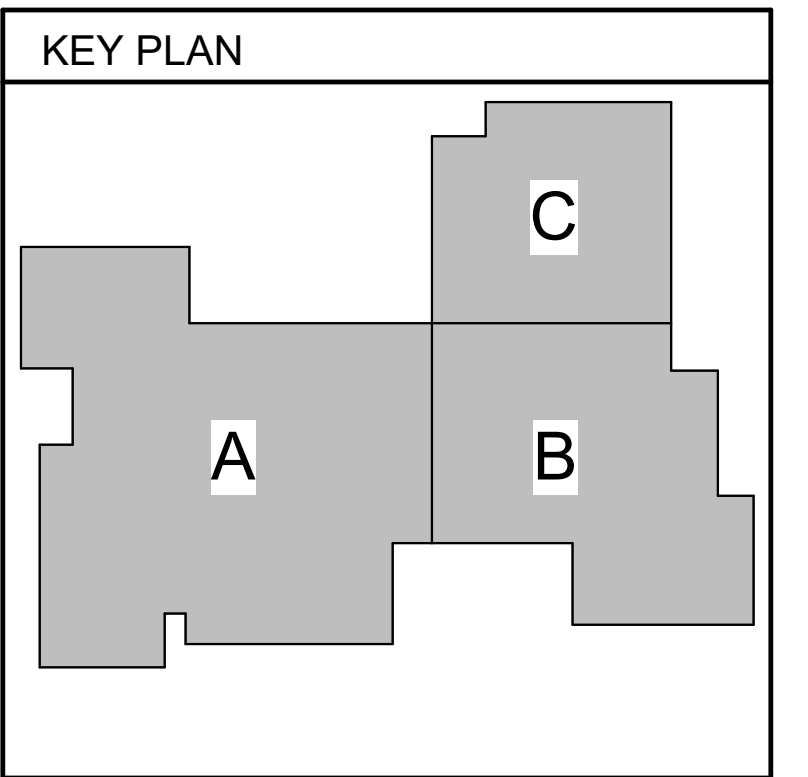
- GENERAL NOTES ON THIS SHEET ARE APPLICABLE TO THIS SHEET ONLY.
- SEE STANDARD MOUNTING HEIGHTS ON SHEET G002 FOR DETAILS REGARDING INSTALLATION REQUIREMENTS FOR FIXTURES AND ACCESSORIES.
- SEE ACCESSIBILITY SYMBOLS AND DIAGRAMS ON SHEET G002 FOR FURTHER INFORMATION ON REQUIRED CLEARANCES.
- ALL INTERIOR DIMENSIONS ARE FROM FACE OF STUD/ MASONRY CONSTRUCTION TO FACE OF STUD/ MASONRY CONSTRUCTION, UNLESS NOTED OTHERWISE.
- "CLEAR DIMENSIONS" ARE DIMENSIONED FROM FACE OF FINISH MATERIAL TO FACE OF FINISH MATERIAL.
- EXTERIOR DIMENSIONS ARE TO BUILDING LINE, SEE WALL TYPES.
- FOR WALL TYPES SEE SHEET A001.
- GENERAL CONTRACTOR SHALL COORDINATE WITH OWNER, BEFORE INSTALLATION OF WALL SHEATHING, FOR ANY WOOD BLOCKING, BACKING AND MOUNTING BOARDS REQUIRED FOR OWNER PROVIDED ITEMS.
- ALL WALLS TO EXTEND TO STRUCTURE ABOVE, UNLESS NOTED OTHERWISE.

**FLOOR PLAN KEYNOTES**

KEYNOTE #	KEYNOTE DESCRIPTION
1	RECESSED BOTTLE FILLER
2	RECESSED FIRE EXTINGUISHER CABINET
3	WALL MOUNTED FIRE EXTINGUISHER
4	WALL MOUNTED BOTTLE FILLER
5	FUME HOOD
6	CUBICAL CURTAIN & TRACK
7	WELDING BOOTH
8	EPOXY RESIN COUNTERTOPS WITH UNDERMOUNT SINKS
9	WALL MOUNTED CLIMBING WALL
10	FLOOR MOUNTED MOP SINK
11	ROOF ACCESS HATCH
12	WALL MOUNTED OVER THE ROOF LADDER
13	WALL MOUNTED SCORE BOARD
14	AIR HANDLING UNIT, SEE MECHANICAL
15	EXHAUST FAN, SEE MECHANICAL
16	36" STAINLESS STEEL GRAB BAR
17	42" STAINLESS STEEL GRAB BAR
18	DUAL ROLL TOILET PAPER DISPENSER
19	SURFACE MOUNTED SANITARY NAPKIN DISPENSER
20	SEMI-RECESSED AUTOMATIC ROLL PAPER TOWEL DISPENSER WITH WASTE RECEPTACLE
21	SURFACE MOUNTED HAND DRYER
22	AUTOMATIC HAND SOAP DISPENSER
23	FRAMELESS MIRROR
24	URINAL SCREEN
25	5'-7" TURNING CLEARANCE
26	GYM WALL PADDING
27	WALL MOUNT ROOF ACCESS LADDER
28	PEDESTAL BENCH
29	(100) TWO TEIR LOCKER
30	(364) SINGLE LOCKER



**1 OVERALL FIRST LEVEL FLOOR PLAN**  
A101 3/32" = 1'-0"





2/9/2026 10:56:10 AM Autodesk Docs/25-128 Venture Academy Addition/Architectural/25-128 Venture Academy\_B24.rvt



GENERAL NOTES	
A.	GENERAL NOTES ON THIS SHEET ARE APPLICABLE TO THIS SHEET ONLY.
B.	SEE SHEET A200 & A201 FOR DOOR AND WINDOW SIZES AND HEAD HEIGHTS.

EXTERIOR FINISH LEGEND	
	UTILITY BRICK
	METAL SIDING (WOOD GRAIN)
	RIBBED METAL SIDING (HORIZONTAL)
	RIBBED METAL SIDING (VERTICAL)
	SMOOTH METAL SIDING (HORIZONTAL)

EXTERIOR ELEVATION KEYNOTES	
KEYNOTE #	KEYNOTE DESCRIPTION
1	CAST STONE SILL
2	ALUMINUM CANOPY
3	PREFINISHED METAL ROOF COPING
4	BACK LIT SIGNAGE BY OTHERS
5	WALL MOUNTED OVER THE ROOF LADDER

JACOB'S WELL CHURCH  
VENTURE ACADEMY  
CHIPPEWA FALLS, WISCONSIN

NOT FOR CONSTRUCTION - CONSTRUCTION DOCUMENTS

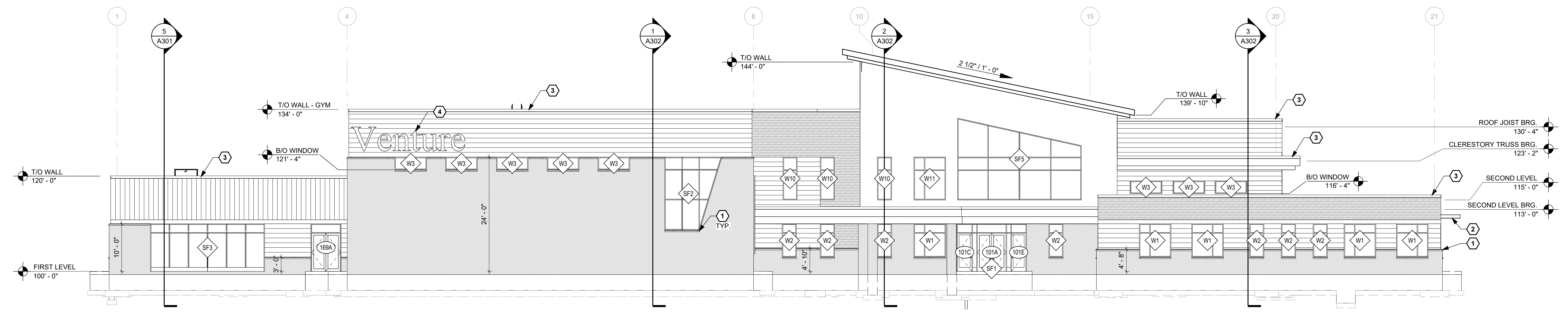
NO.	DATE	DESCRIPTION

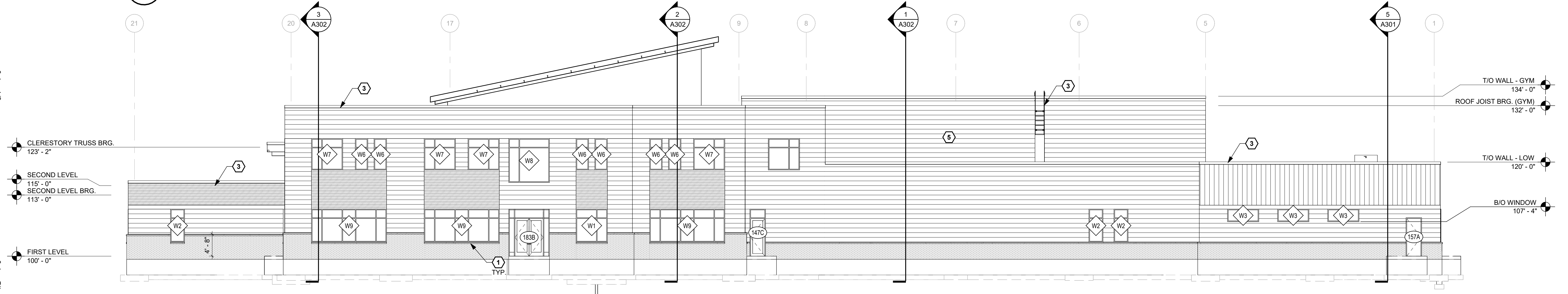
DRAWN BY:	AB
PM:	MP
JOB NO:	25-128
DATE:	02.09.2026

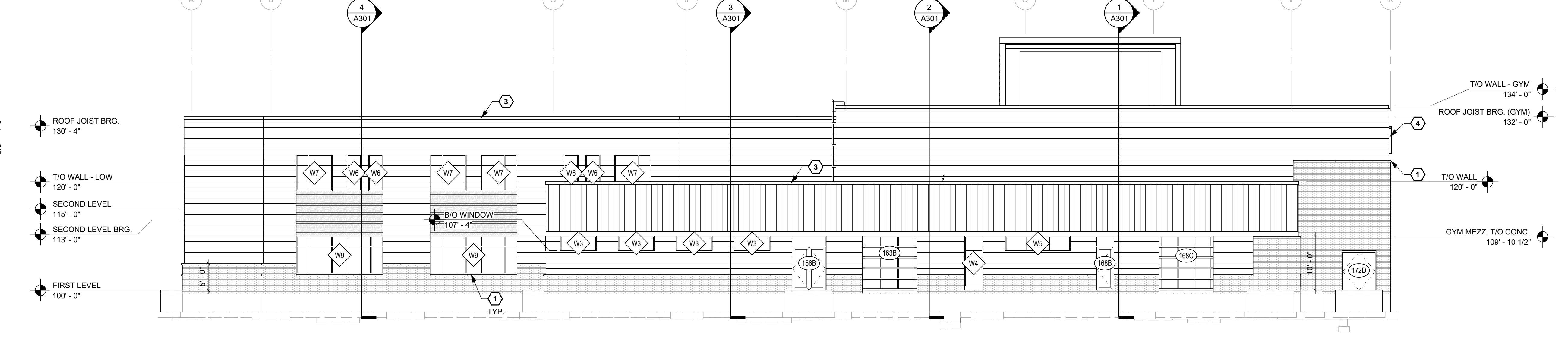
EXTERIOR ELEVATIONS
A202



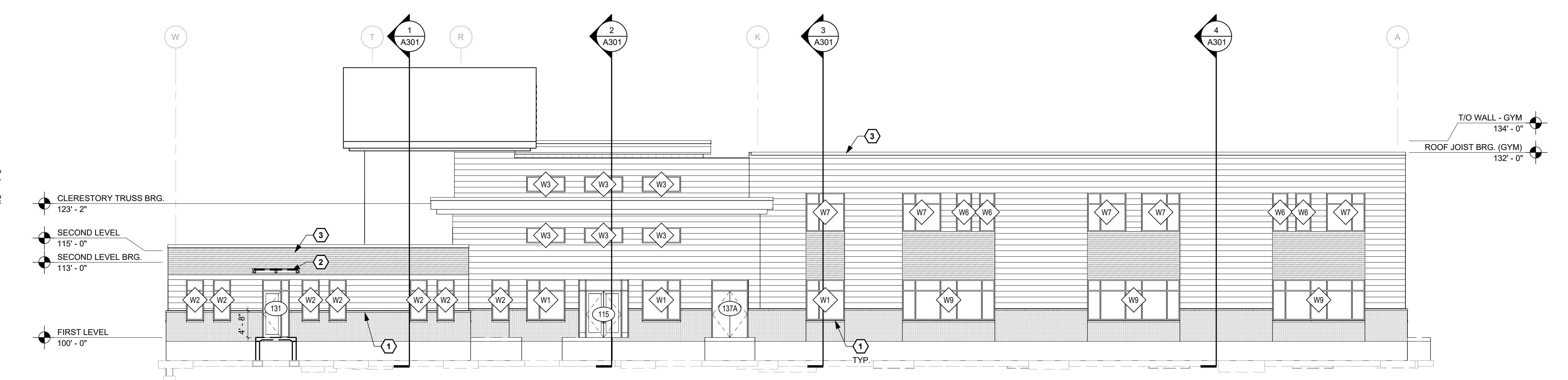
1 NORTH ELEVATION  
A202 3/32" = 1'-0"



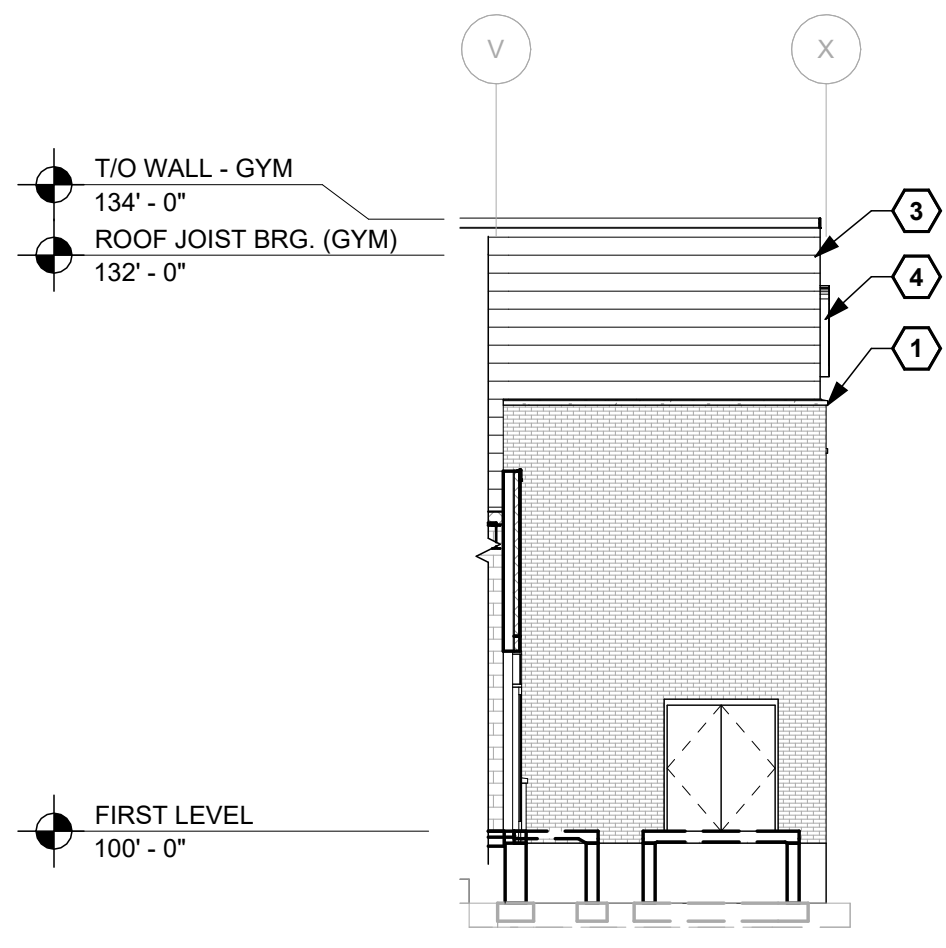
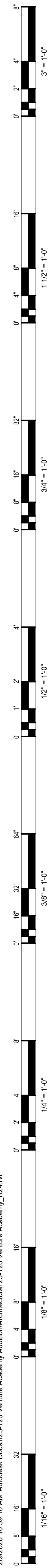
2 SOUTH ELEVATION  
A202 3/32" = 1'-0"



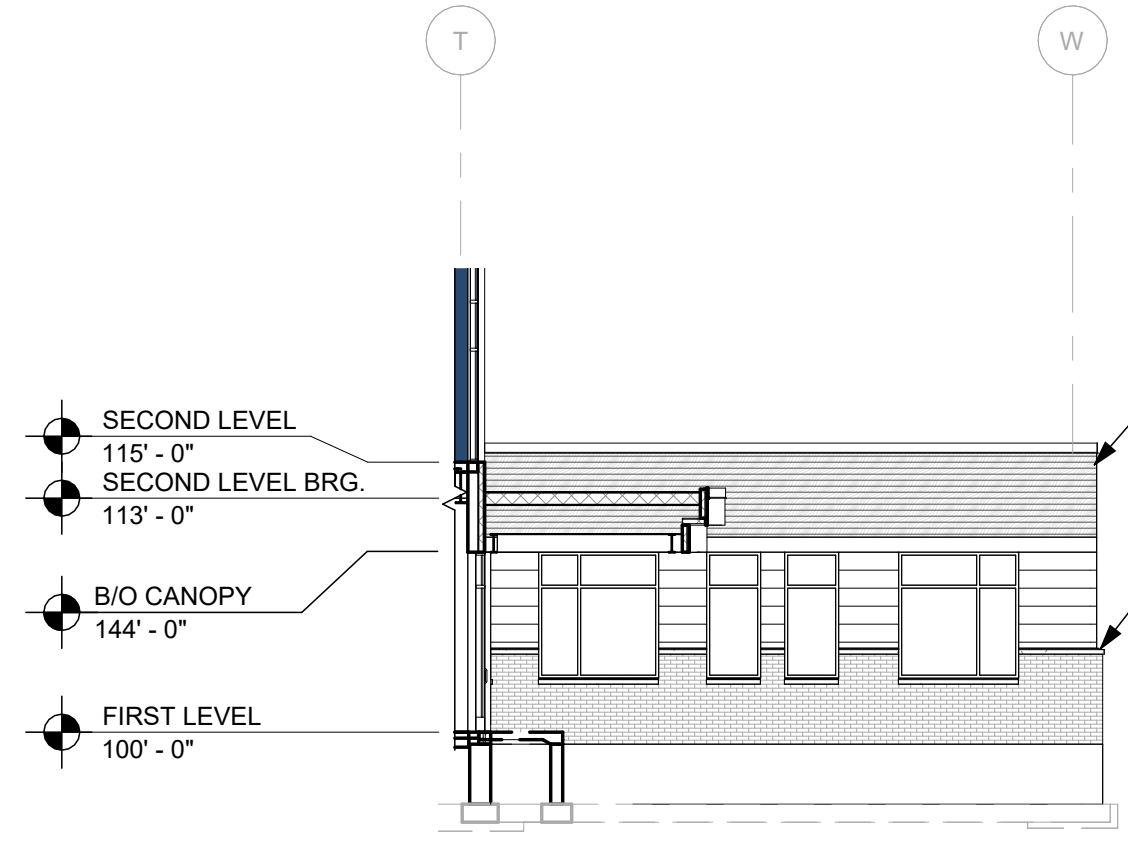
3 EAST ELEVATION  
A202 3/32" = 1'-0"



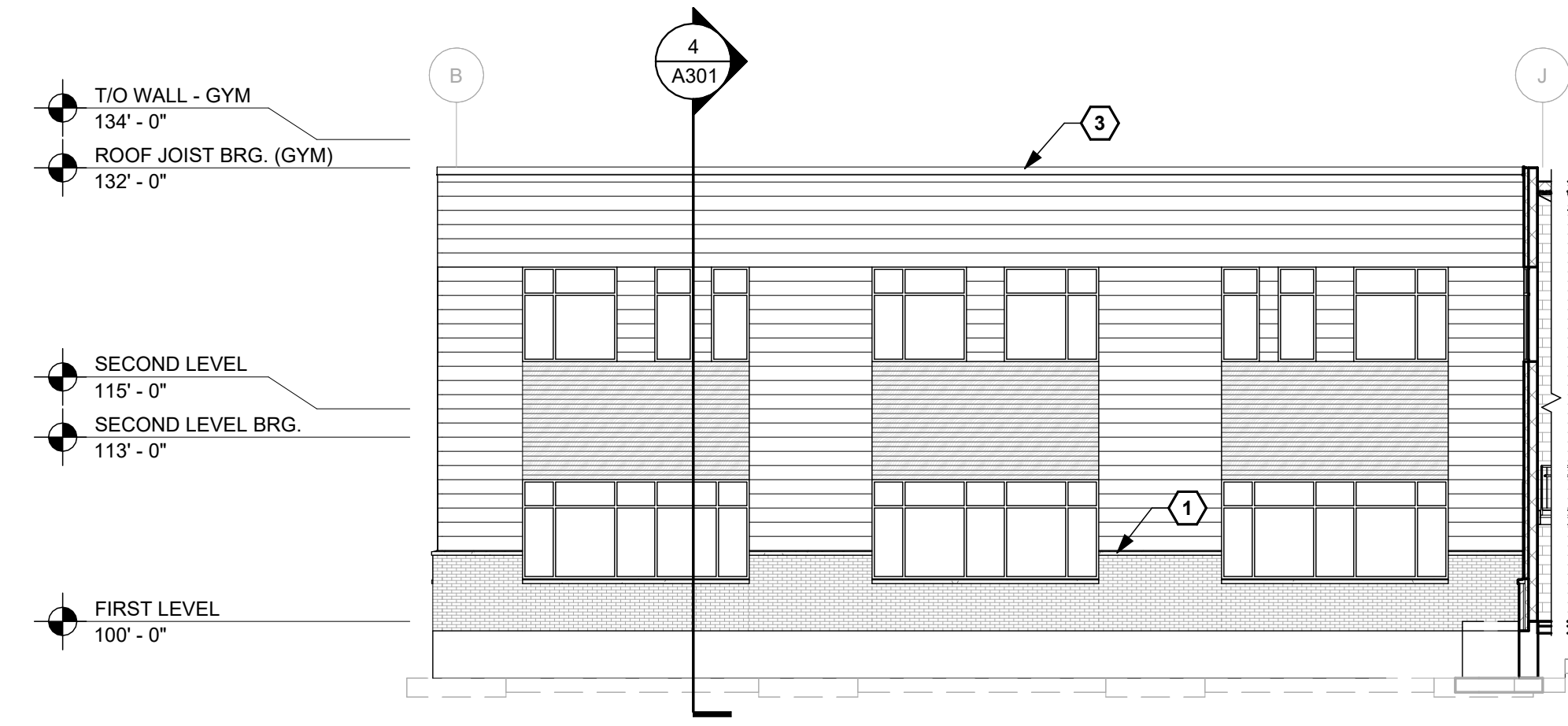
4 WEST ELEVATION  
A202 3/32" = 1'-0"



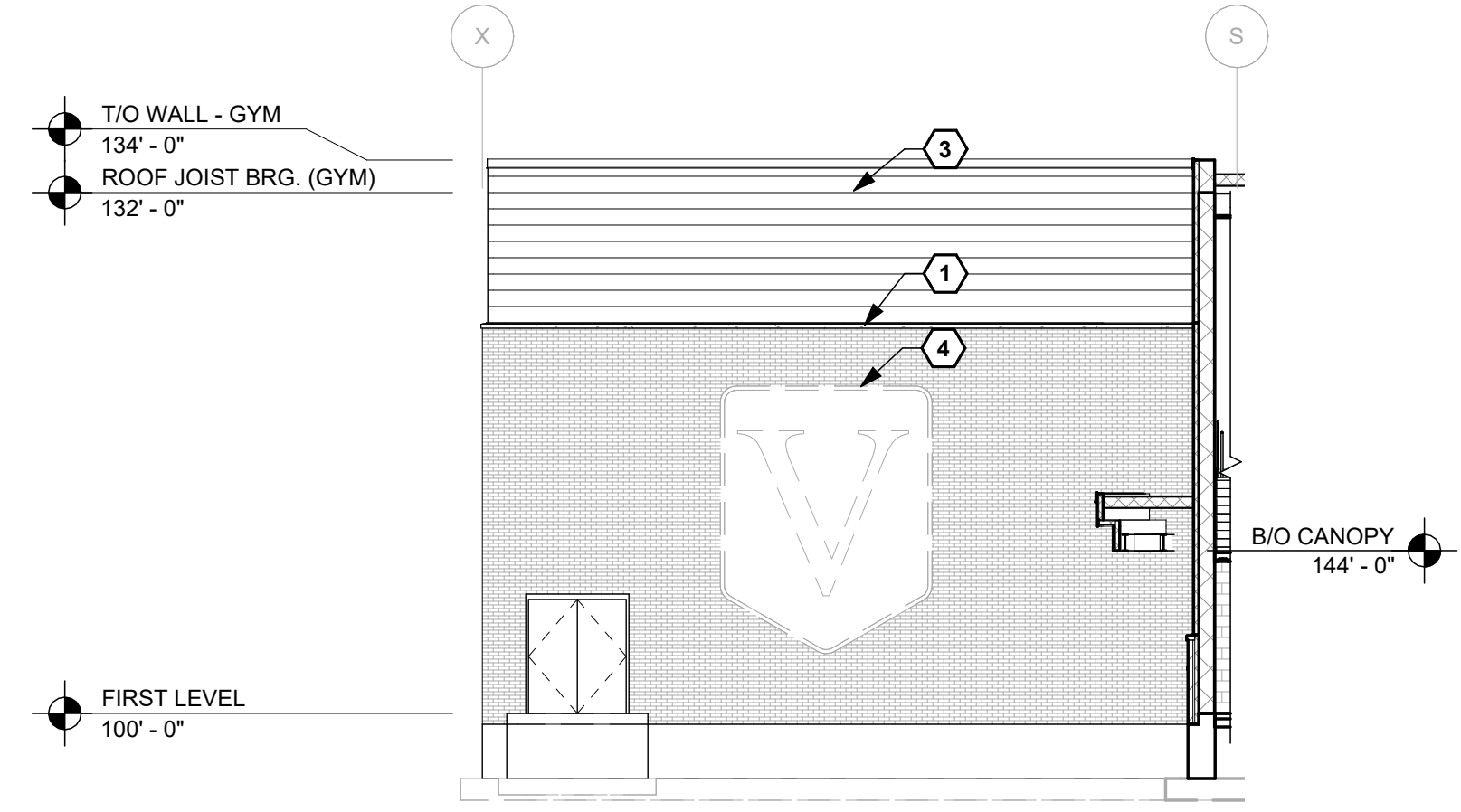
**3 PARTIAL EAST ELEVATION**  
A203 3/32" = 1'-0"



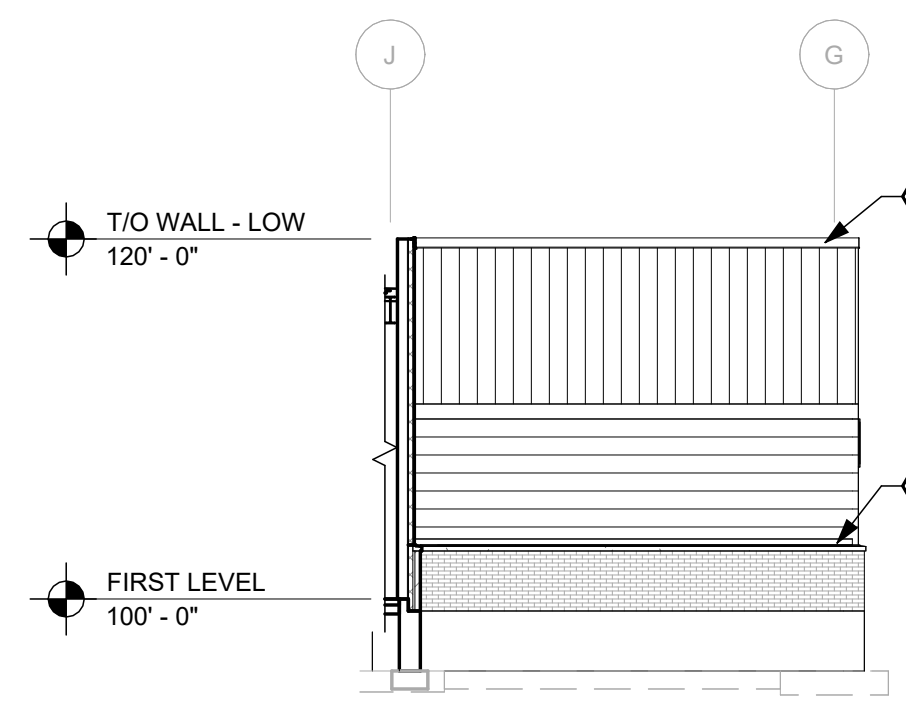
**5 PARTIAL EAST ELEVATION**  
A203 3/32" = 1'-0"



**7 PARTIAL EAST ELEVATION**  
A203 3/32" = 1'-0"



**6 PARTIAL WEST ELEVATION**  
A203 3/32" = 1'-0"



**8 PARTIAL WEST ELEVATION**  
A203 3/32" = 1'-0"

**GENERAL NOTES**  
A. GENERAL NOTES ON THIS SHEET ARE APPLICABLE TO THIS SHEET ONLY.  
B. SEE SHEET A200 & A201 FOR DOOR AND WINDOW SIZES AND HEAD HEIGHTS.

**EXTERIOR FINISH LEGEND**

	UTILITY BRICK		METAL SIDING (WOOD GRAIN)
	RIBBED METAL SIDING (HORIZONTAL)		RIBBED METAL SIDING (VERTICAL)
	SMOOTH METAL SIDING (HORIZONTAL)		

**EXTERIOR ELEVATION KEYNOTES**

KEYNOTE #	KEYNOTE DESCRIPTION
1	CAST STONE SILL
2	ALUMINUM CANOPY
3	PREFINISHED METAL ROOF COPING
4	BACK LIT SIGNAGE BY OTHERS
5	WALL MOUNTED OVER THE ROOF LADDER

NOT FOR CONSTRUCTION - CONSTRUCTION DOCUMENTS



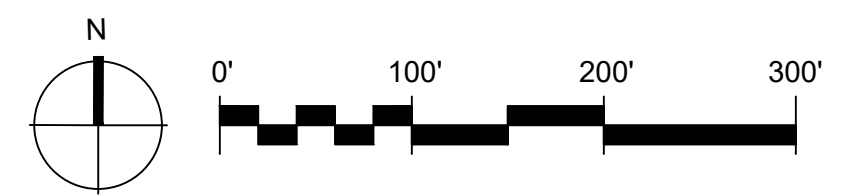
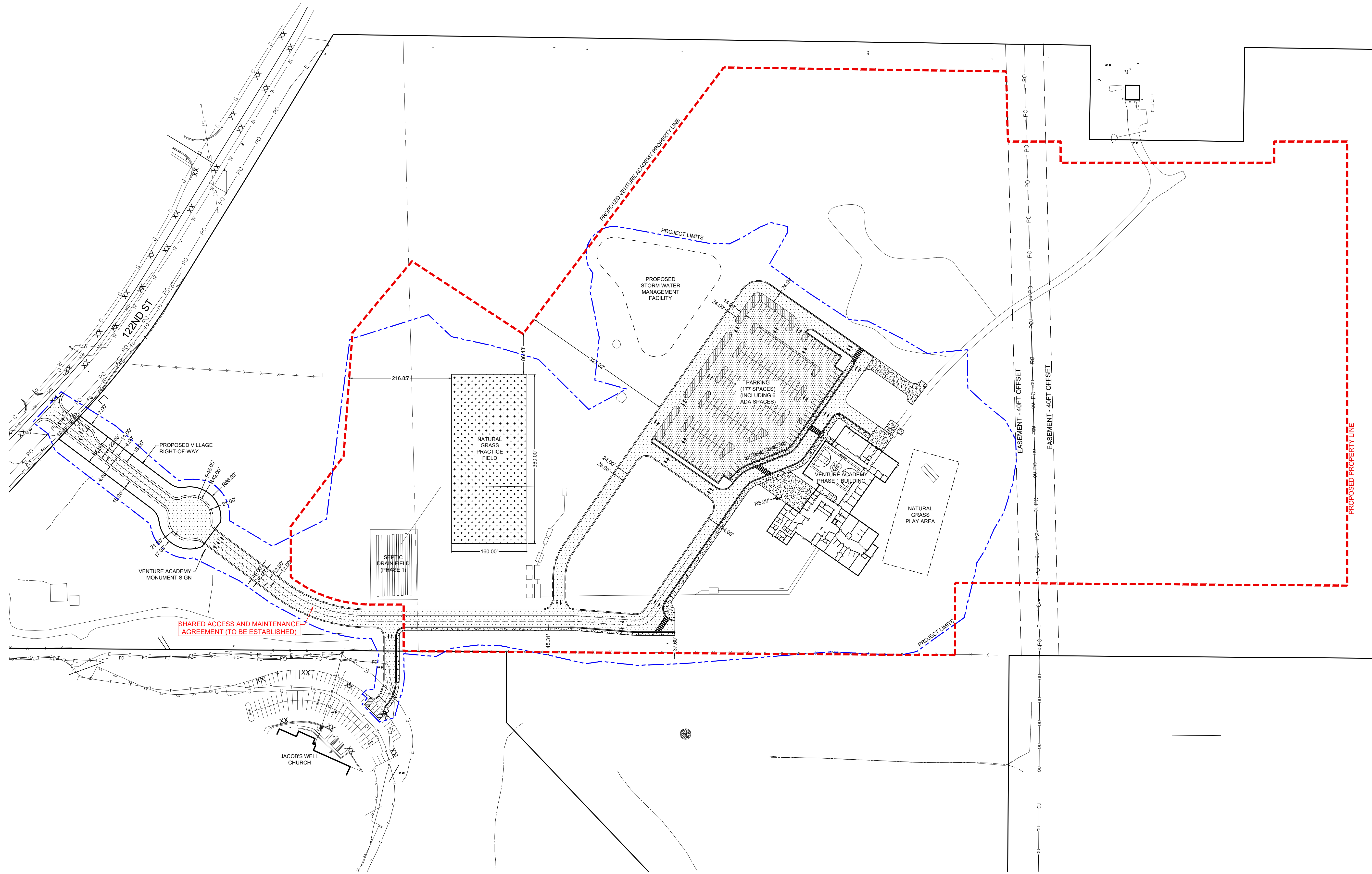
JACOB'S WELL CHURCH  
VENTURE ACADEMY  
CHIPPEWA FALLS, WISCONSIN

NO.	DATE	DESCRIPTION

DRAWN BY: AB  
PM: MP  
JOB NO: 25-128  
DATE: 02.09.2026

EXTERIOR ELEVATIONS  
**A203**





NOT FOR CONSTRUCTION - DESIGN DEVELOPMENT

NO.	DATE	DESCRIPTION

DRAWN BY: RAR  
 PM: MH  
 JOB NO: 25-128  
 DATE: 02.16.2026

CIVIL SITE PLAN

SITE LAYOUT PLAN (ENTIRE)

C300

JACOB'S WELL CHURCH  
 VENTURE ACADEMY  
 989 122ND STREET, CHIPPEWA FALLS, WI 54729



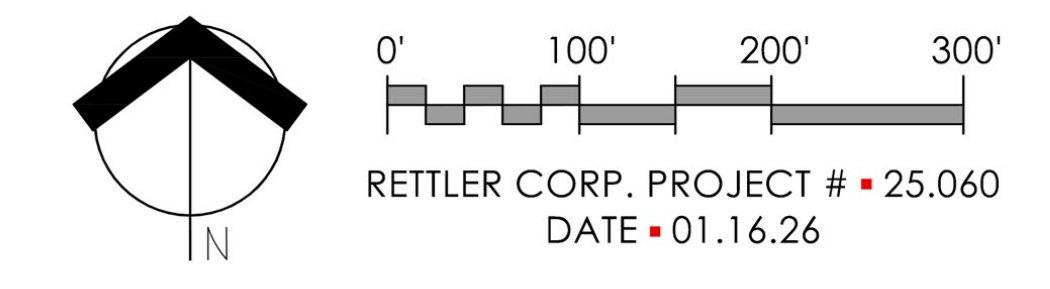
**KEYNOTES**

- |   |                            |                              |                               |                         |
|---|----------------------------|------------------------------|-------------------------------|-------------------------|
| ① STADIUM WITH RUNNING TRACK & ATHLETIC FIELD | ⑤ TENNIS (6 COURTS)        | ⑩ PARKING (~170 SPACES)      | ⑮ PLAYGROUND                  | APPROXIMATE WETLANDS    |
| ② FIELDHOUSE (75'x130')                       | ⑥ SHOT PUT                 | ⑪ PARKING (~21 SPACES)       | ⑯ STORM WATER MANAGEMENT AREA | ⑳ MUNICIPAL WELL ACCESS |
| ③ BASEBALL                                    | ⑦ DISCUS                   | ⑫ PARKING (~108 SPACES)      | ⑰ POTENTIAL SEPTIC AREA       | ㉑ MAINTENANCE BUILDING  |
| ④ SOFTBALL                                    | ⑧ ELECTRICAL EASEMENT AREA | ⑬ VENTURE ACADEMY            | ⑱ BUS DROP OFF/PICKUP AREA    |                         |
|   | ⑨ PARKING (~74 SPACES)     | ⑭ PRACTICE FIELD (160'x360') | ⑲ PARENT DROP OFF/PICKUP AREA |                         |



CHIPPEWA COUNTY LINE  
EAU CLAIRE COUNTY LINE

**VENTURE ACADEMY**  
CONCEPT 4a  
LAKE HALLIE, WISCONSIN



**RETTLER**  
corporation  
• 3317 BUSINESS PARK DRIVE, STEVENS POINT, WI 54482  
• TELEPHONE • 715 • 341 • 2633, FAX • 715 • 341 • 0431  
• EMAIL: INFO@RETTLER.COM • WEBSITE: WWW.RETTLER.COM